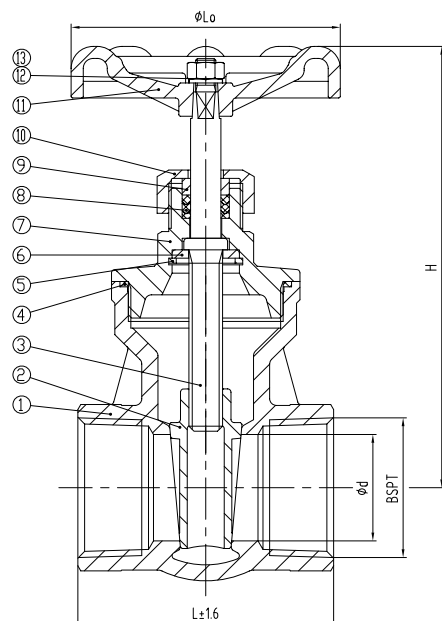


ARITA STAINLESS STEEL GATE VALVE

CLASS 200 / 600 GATE VALVE (BSPT)

ARV-101SE



STANDARD COMPONENT MATERIAL

NO	DESCRIPTION	QTY.	MATERIAL
1	Body	1	Stainless Steel
2	Disc	1	Stainless Steel
3	Stem	1	Stainless Steel
4	Gasket	1	RPTFE
5	Ring	1	Stainless Steel
6	Washer	1	Stainless Steel
7	Bonnet	1	Stainless Steel
8	Packing	1	RPTFE
9	Gland	1	Stainless Steel
10	Packing Nut	1	Stainless Steel
11	Handwheel	1	Aluminium
12	Spring Washer	1	Steel
13	Nut	1	Steel

SPECIFICATIONS

- Stainless steel body and bonnet
- Screwed end (BSPT)
- Applicable temperature : -20 ~ 180 ° C
- Applicable media : W.O.G. and steam

TEST PRESSURE

Nominal Pressure	:	200 Psi (1.4 MPa)
Shell Test Pressure	:	300 Psi (2.1 MPa)
Seat Test Pressure	:	220 Psi (1.5 MPa)
Gas Seat Test Pressure	:	90 Psi (0.6 MPa)

DIMENSION TABLE (MM)

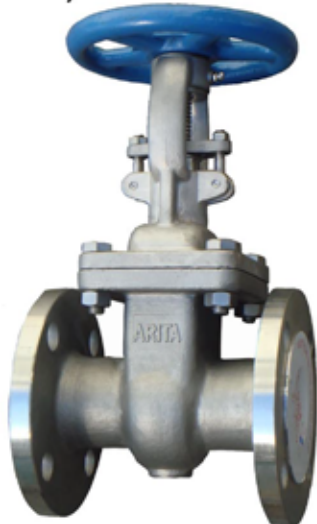
DN	L	d	BSPT	Lo	H	Weight (Kg)
15	55	14	1/2	70	92	0.36
20	60	20	3/4	70	101	0.49
25	68	25	1	80	113	0.68
32	76	32	1-1/4	80	133	0.99
40	80	40	1-1/2	100	153	1.46
50	93	50	2	100	171	2.17
65	113	63	2-1/2	140	205	5.35
80	137	72	3	140	226	7.10



A MEMBER OF UNIMECH GROUP, MALAYSIA

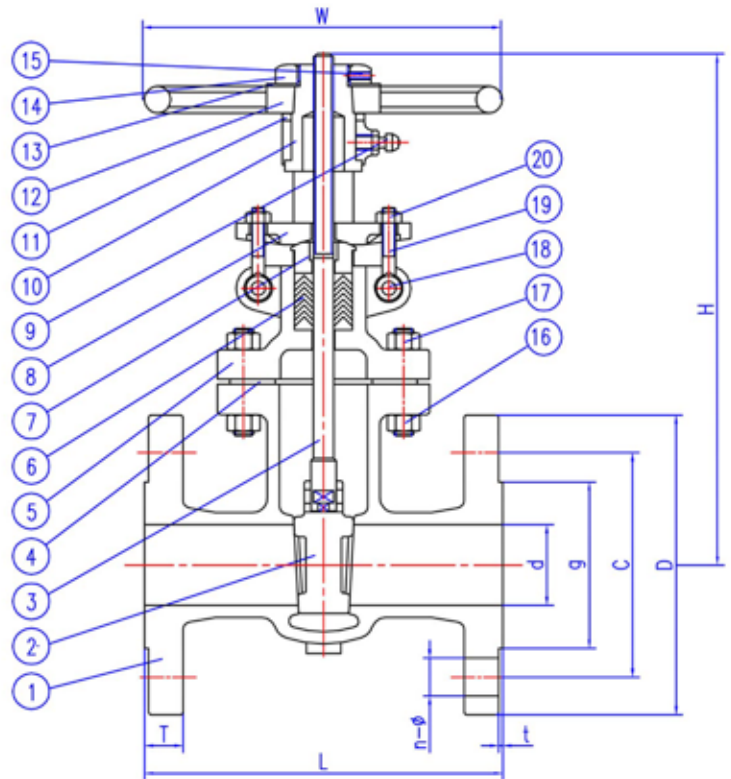
STAINLESS STEEL GATE VALVE FLANGED END 150 LB

(size 15mm~150mm)



Features :

- Pressure - Temperature Rating : ASME B16.34
- Face to Face : ASME B16.10
- Flange Connection Dimensions : ASME B16.5
- Inspection and Test : API 598
- Shell Test : 3.1 Mpa
- High Pressure Sealing Test : 2.2 Mpa



Technical Data

Material

No.	PART	MATERIAL	
1	BODY	A351-CF8	A351-CF8M
2	DISC	A351-CF8	A351-CF8M
3	STEM	A276-304	A276-316
4	GASKET	PTFE	PTFE
5	BONNET	A351-CF8	A351-CF8M
6	PACKING	PTFE	PTFE
7	GLAND	A276-304	A276-316
8	GLAND FLANGE	A351-CF8	A351-CF8
9	GREASE SPOT	COPPER + NICKEL COATED	
10	YOKE NUT	A439-D2	A-439-D2

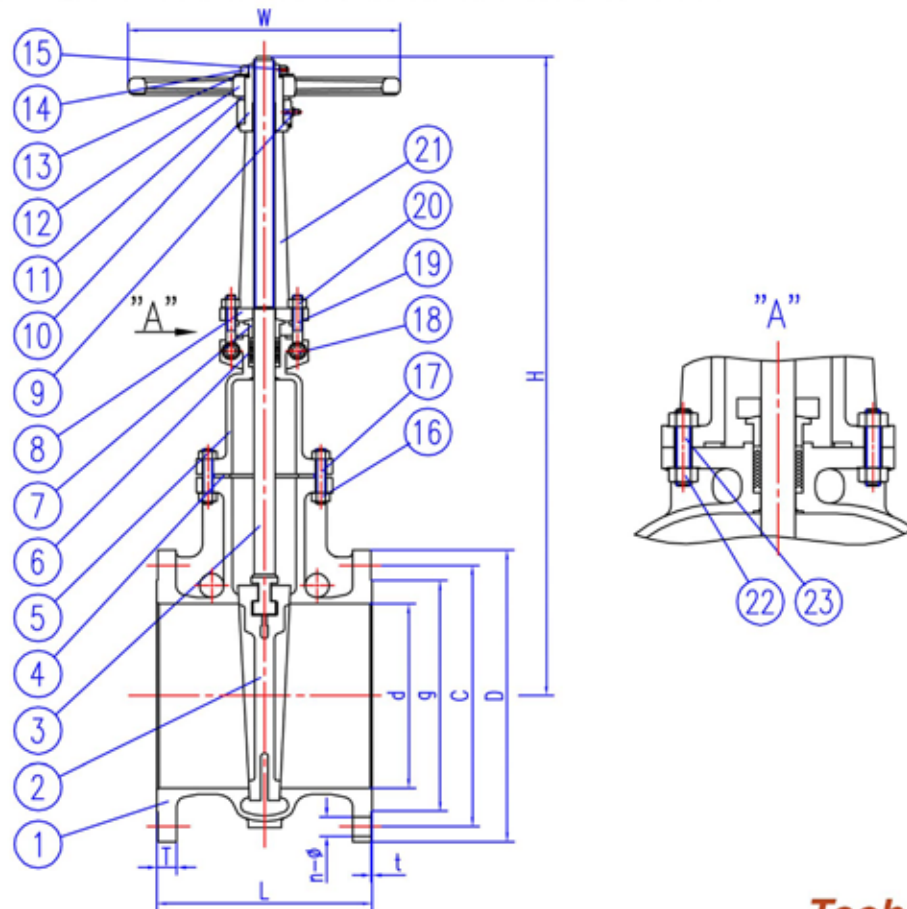
No.	PART	MATERIAL	
11	WASHER	A395-65-45-15	A395-65-45-15
12	HANDWHEEL	A395-65-45-15	A395-65-45-15
13	NAMEPLATE	A276-304	A276-304
14	HANDWHEEL NUT	A276-304	A276-304
15	SET SCREW	A276-304	A276-304
16	NUT	A194-8	A194-8
17	BONNET BOLT	A193-B8	A193-B8
18	HINGE PIN	A276-304	A276-304
19	EYEBOLT	A193-B8	A193-B8
20	NUT	A194-8	A194-8

Dimension in mm

SIZES		d	L	D	C	g	T	t	n-Ø	H
DN	in.									
15	1/2"	15	108	90	60.3	35	10	2	4-16	196
20	3/4"	20	117	100	69.9	43	10.9	2	4-16	207.5
25	1"	25	127	110	79.4	51	11.6	2	4-16	220
32	1.1/4"	32	165	115	88.9	63.5	13.2	2	4-16	276
40	1.1/2"	40	165	125	98.4	73	14.7	2	4-16	276
50	2"	50	178	150	120.7	92	16.3	2	4-19	327
65	2.1/2"	65	190	180	139.7	105	17.9	2	4-19	397.5
80	3"	80	203	190	152.4	127	19.5	2	4-19	438
100	4"	100	229	230	190.5	157	24.3	2	8-19	516
125	5"	125	254	255	215.9	186	24.3	2	8-22	673
150	6"	150	267	280	241.3	216	25.9	2	8-22	727

STAINLESS STEEL GATE VALVE FLANGED END 150 LB

(size 200mm~300mm)



Technical Data

Material

No.	PART	MATERIAL	
1	BODY	A351-CF8	A351-CF8M
2	DISC	A351-CF8	A351-CF8M
3	STEM	A276-304	A276-316
4	GASKET	PTFE	PTFE
5	BONNET	A351-CF8	A351-CF8M
6	PACKING	PTFE	PTFE
7	GLAND	A276-304	A276-316
8	GLAND PACKING	A351-CF8	A351-CF8
9	GREAGE SPOT	COPPER+NICKEL COATED	
10	YOKE NUT	A439-D2	A439-D2
11	WASHER	A395-65-45-15	A395-65-45-15
12	HANDWHEEL	A395-65-45-15	A395-65-45-15

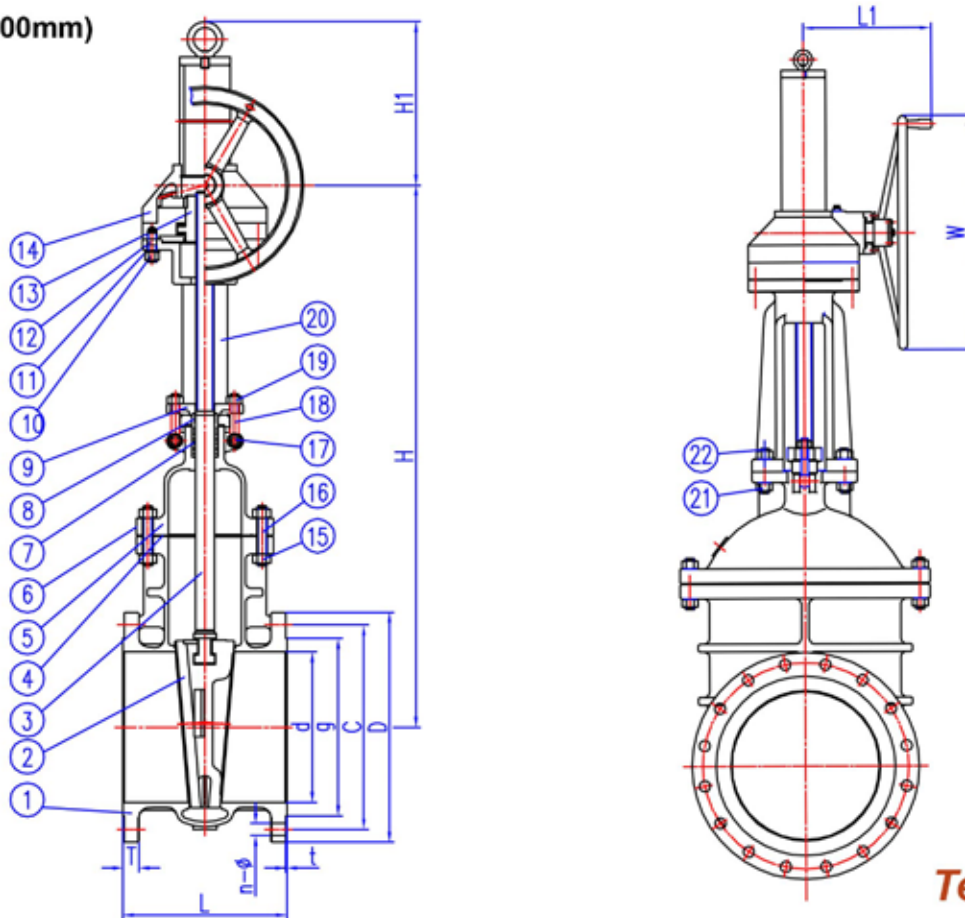
No.	PART	MATERIAL	
13	NAMEPLATE	A276-304	A276-304
14	HANDWHEEL NUT	A351-CF8	A351-CF8
15	SET SCREW	A276-304	A276-304
16	NUT	A194-8	A194-8
17	BONNET BOLT	A193-B8	A193-B8
18	HINGE PIN	A276-304	A276-304
19	EYEBOLT	A193-B8	A193-B8
20	NUT	A194-8	A194-8
21	YOKE	A351-CF8	A351-CF8
22	NUT	A194-8	A194-8
23	BOLT	A193-B8	A193-B8

Dimension in mm

SIZES		d	L	D	C	g	T	t	n-Ø	H
DN	in.									
200	8"	200	292	345	298.5	270	29	2	8-22	923
250	10"	250	405	405	362	324	30.6	2	12-25	1130
300	12"	300	485	485	431.8	381	32.2	2	12-25	1386

STAINLESS STEEL GATE VALVE FLANGED END 150 LB

(size 350mm~600mm)



Technical Data

Material

No.	PART	MATERIAL	
1	BODY	A351-CF8	A351-CF8M
2	FLEXIBLE GATE DISC	A351-CF8	A351-CF8M
3	STEM	A276-304	A276-316
4	GASKET	A276-304+PTFE	A276-304+PTFE
5	BONNET	A351-CF8	A351-CF8M
6	NAMEPLATE	A276-304	A276-304
7	PACKING	PTFE	PTFE
8	GLAND	A276-304	A276-316
9	GLAND PACKING	A351-CF8	A351-CF8
10	NUT	A194-8	A194-8
11	SPRING GASKET	A276-304	A276-304

No.	PART	MATERIAL	
12	BOLT	A193-B8	A193-B8
13	YOKE NUT	ZCuAl10Fe3	ZCuAl10Fe3
14	CONICAL GEAR ACTUATOR	Subassembly	Subassembly
15	NUT	A194-8	A194-8
16	BONNET BOLT	A193-B8	A193-B8
17	HINGE PIN	A276-304	A276-304
18	EYEBOLT	A193-B8	A193-B8
19	NUT	A194-8	A194-8
20	YOKE	A351-CF8	A351-CF8
21	NUT	A194-8	A194-8
22	BOLT	A193-B8	A193-B8

Dimension in mm

SIZES		d	L	D	C	g	T	t	n-Ø	H	H1	L1
DN	in.											
350	14"	350	381	535	476.3	413	35.4	2	12-29	1258	460	340
400	16"	387	406	595	539.8	470	37	2	16-29	1388	480	340
450	18"	436	432	635	577.9	533	40.1	2	16-32	1498	600	340
500	20"	483	457	700	635	584	43.3	2	20-32	1576	605	431
600	24"	589	508	815	749.3	692	48.1	2	20-35	1849	735	431



A MEMBER OF UNIMECH GROUP, MALAYSIA

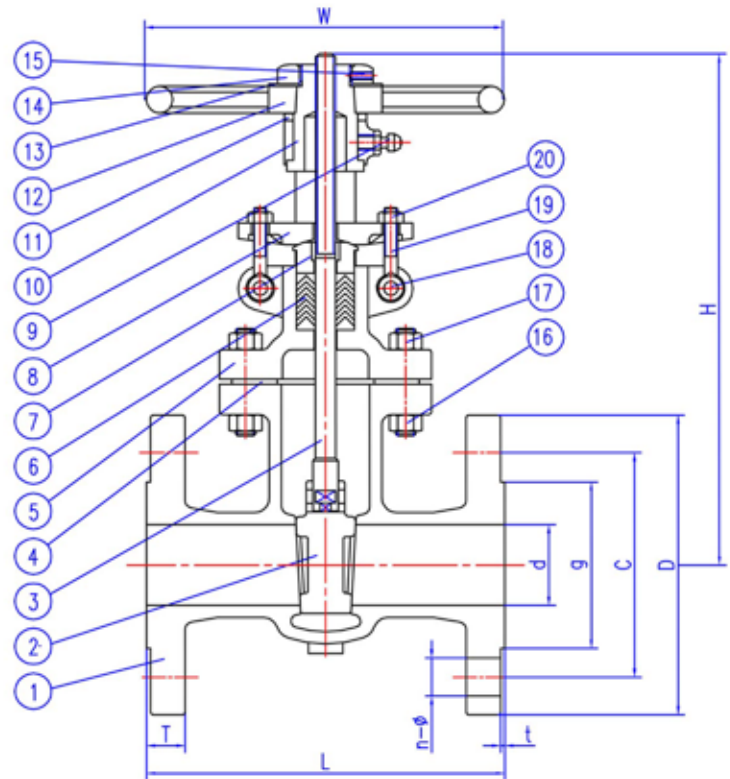
STAINLESS STEEL GATE VALVE FLANGED END JIS 10K

(size 15mm~150mm)



Features :

- Pressure - Temperature Rating : ASME B16.34
- Face to Face : JIS B2002
- Flange Connection Dimensions : JIS B2220
- Inspection and Test : API 598
- Shell Test : 3.1 Mpa
- High Pressure Sealing Test : 2.2 Mpa



Technical Data

Material

No.	PART	MATERIAL	
1	BODY	A351-CF8	A351-CF8M
2	DISC	A351-CF8	A351-CF8M
3	STEM	A276-304	A276-316
4	GASKET	PTFE	PTFE
5	BONNET	A351-CF8	A351-CF8M
6	PACKING	PTFE	PTFE
7	GLAND	A276-304	A276-316
8	GLAND FLANGE	A351-CF8	A351-CF8
9	GREASE SPOT	COPPER + NICKEL COATED	
10	YOKE NUT	A439-D2	A-439-D2

No.	PART	MATERIAL	
11	WASHER	A395-65-45-15	A395-65-45-15
12	HANDWHEEL	A395-65-45-15	A395-65-45-15
13	NAMEPLATE	A276-304	A276-304
14	HANDWHEEL NUT	A276-304	A276-304
15	SET SCREW	A276-304	A276-304
16	NUT	A194-8	A194-8
17	BONNET BOLT	A193-B8	A193-B8
18	HINGE PIN	A276-304	A276-304
19	EYEBOLT	A193-B8	A193-B8
20	NUT	A194-8	A194-8

Dimension in mm

SIZES		d	L	D	C	g	T	t	n-Ø	H	W
DN	in.										
15	1/2"	15	108	95	70	51	12	1	4-15	196	100
20	3/4"	20	117	100	75	56	14	1	4-15	207.5	100
25	1"	25	127	125	90	67	14	1	4-15	220	100
32	1.1/4"	32	165	135	100	76	16	2	4-19	276	138
40	1.1/2"	40	165	140	105	73	16	2	4-19	276	138
50	2"	50	178	155	120	96	16	2	4-19	327	160
65	2.1/2"	65	190	175	140	116	18	2	4-19	397.5	200
80	3"	80	203	185	150	126	18	2	8-19	438	200
100	4"	100	229	210	175	151	18	2	8-19	516	224
125	5"	125	254	250	210	182	20	2	8-23	673	280
150	6"	150	267	280	240	212	22	2	8-23	727	280

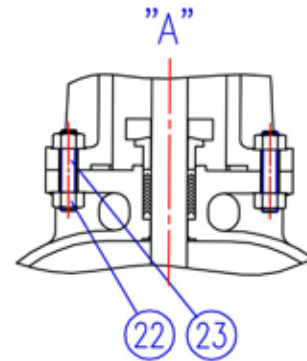
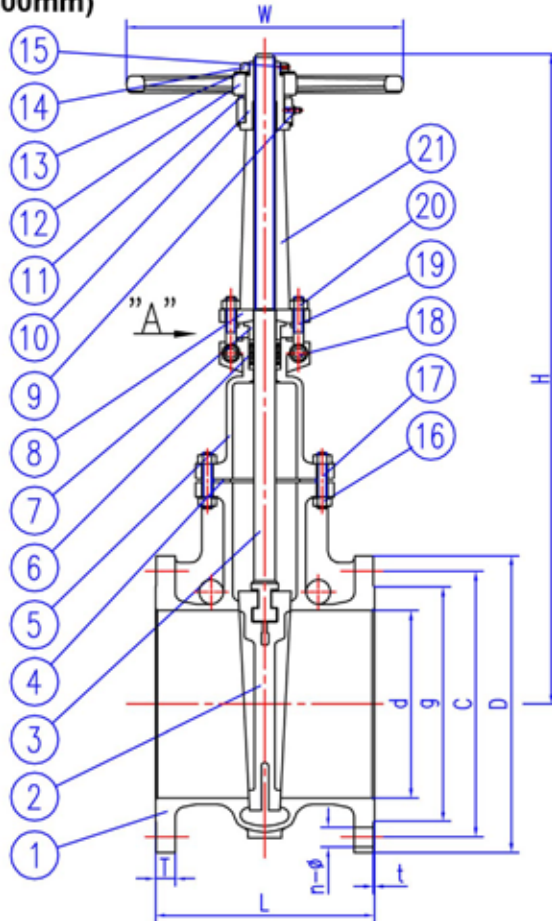
The contents of this literature are for informative purposes only. Arita is not responsible for suitability or compatibility of these products in relation to system requirement. For specific requirements, consult Arita or its distributors. Arita reserves the right to change or modify product design without prior notice.



A MEMBER OF UNIMECH GROUP, MALAYSIA

STAINLESS STEEL GATE VALVE FLANGED END JIS 10K

(size 350mm~600mm)



Features :

- Pressure - Temperature Rating : ASME B16.34
- Face to Face : JIS B2002
- Flange Connection Dimensions : JIS B2220
- Inspection and Test : API 598
- Shell Test : 3.1 Mpa
- High Pressure Sealing Test : 2.2 Mpa

Technical Data

Material

No.	PART	MATERIAL	
1	BODY	A351-CF8	A351-CF8M
2	DISC	A351-CF8	A351-CF8M
3	STEM	A276-304	A276-316
4	GASKET	PTFE	PTFE
5	BONNET	A351-CF8	A351-CF8M
6	PACKING	PTFE	PTFE
7	GLAND	A276-304	A276-316
8	GLAND PACKING	A351-CF8	A351-CF8
9	GREAGE SPOT	COPPER+NICKEL COATED	
10	YOKE NUT	A439-D2	A439-D2
11	WASHER	A395-65-45-15	A395-65-45-15
12	HANDWHEEL	A395-65-45-15	A395-65-45-15

No.	PART	MATERIAL	
13	NAMEPLATE	A276-304	A276-304
14	HANDWHEEL NUT	A351-CF8	A351-CF8
15	SET SCREW	A276-304	A276-304
16	NUT	A194-8	A194-8
17	BONNET BOLT	A193-B8	A193-B8
18	HINGE PIN	A276-304	A276-304
19	EYEBOLT	A193-B8	A193-B8
20	NUT	A194-8	A194-8
21	YOKE	A351-CF8	A351-CF8
22	NUT	A194-8	A194-8
23	BOLT	A193-B8	A193-B8

Dimension in mm

SIZES		d	L	D	C	g	T	t	n-Ø	H	W
DN	in.										
200	8"	200	292	330	290	262	22	2	12-23	923	300
250	10"	250	405	400	355	324	24	2	12-25	1130	350
300	12"	300	485	445	400	368	24	3	16-25	1386	450

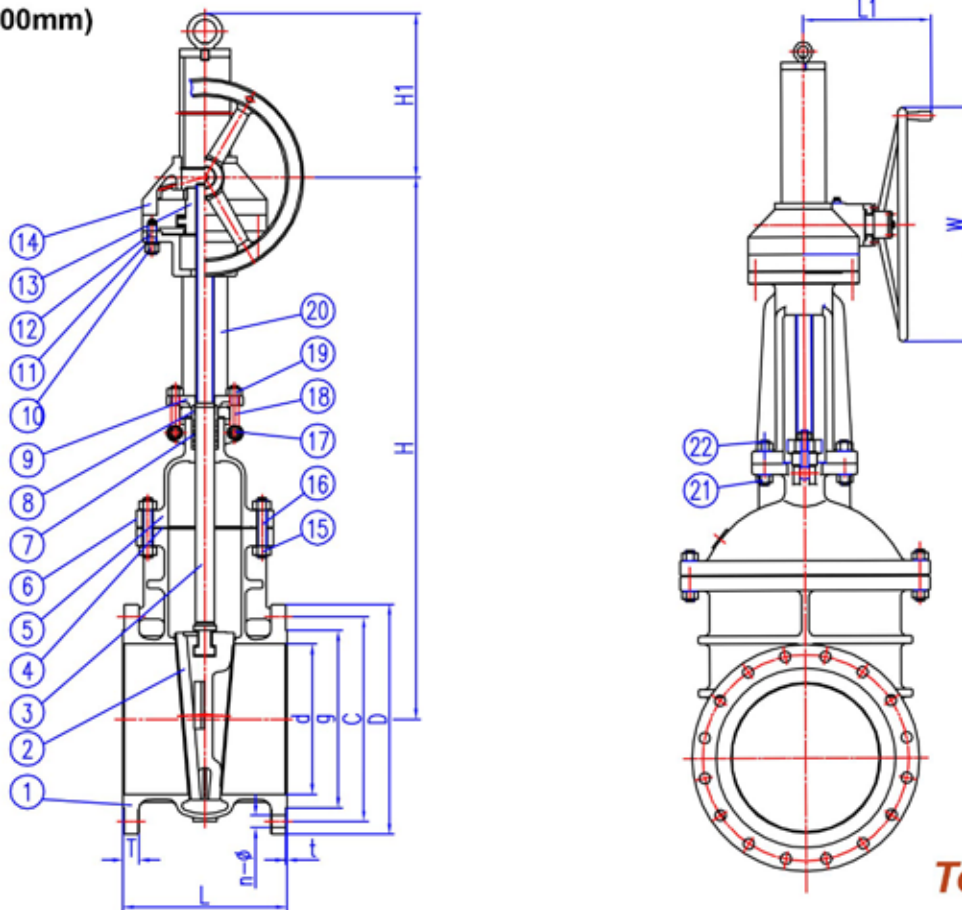
The contents of this literature are for informative purposes only. Arita is not responsible for suitability or compatibility of these products in relation to system requirement. For specific requirements, consult Arita or its distributors. Arita reserves the right to change or modify product design without prior notice.



A MEMBER OF UNIMECH GROUP, MALAYSIA

STAINLESS STEEL GATE VALVE FLANGED END JIS 10K

(size 350mm~600mm)



Technical Data

Material

No.	PART	MATERIAL	
1	BODY	A351-CF8	A351-CF8M
2	FLEXIBLE GATE DISC	A351-CF8	A351-CF8M
3	STEM	A276-304	A276-316
4	GASKET	A276-304+PTFE	A276-304+PTFE
5	BONNET	A351-CF8	A351-CF8M
6	NAMEPLATE	A276-304	A276-304
7	PACKING	PTFE	PTFE
8	GLAND	A276-304	A276-316
9	GLAND PACKING	A351-CF8	A351-CF8
10	NUT	A194-8	A194-8
11	SPRING GASKET	A276-304	A276-304

No.	PART	MATERIAL	
12	BOLT	A193-B8	A193-B8
13	YOKE NUT	ZCuAl10Fe3	ZCuAl10Fe3
14	CONICAL GEAR ACTUATOR	Subassembly	Subassembly
15	NUT	A194-8	A194-8
16	BONNET BOLT	A193-B8	A193-B8
17	HINGE PIN	A276-304	A276-304
18	EYEBOLT	A193-B8	A193-B8
19	NUT	A194-8	A194-8
20	YOKE	A351-CF8	A351-CF8
21	NUT	A194-8	A194-8
22	BOLT	A193-B8	A193-B8

Dimension in mm

SIZES		d	L	D	C	g	T	t	n-Ø	H	H1	L1
DN	in.											
350	14"	350	381	490	445	413	26	3	16-25	1258	460	340
400	16"	387	406	560	510	475	28	3	16-27	1388	480	340
450	18"	436	432	620	565	530	30	3	20-27	1498	600	340
500	20"	483	457	675	620	585	30	3	20-27	1576	605	431
600	24"	589	508	795	730	690	36	3	24-33	1849	735	431

The contents of this literature are for informative purposes only. Arita is not responsible for suitability or compatibility of these products in relation to system requirement. For specific requirements, consult Arita or its distributors. Arita reserves the right to change or modify product design without prior notice.

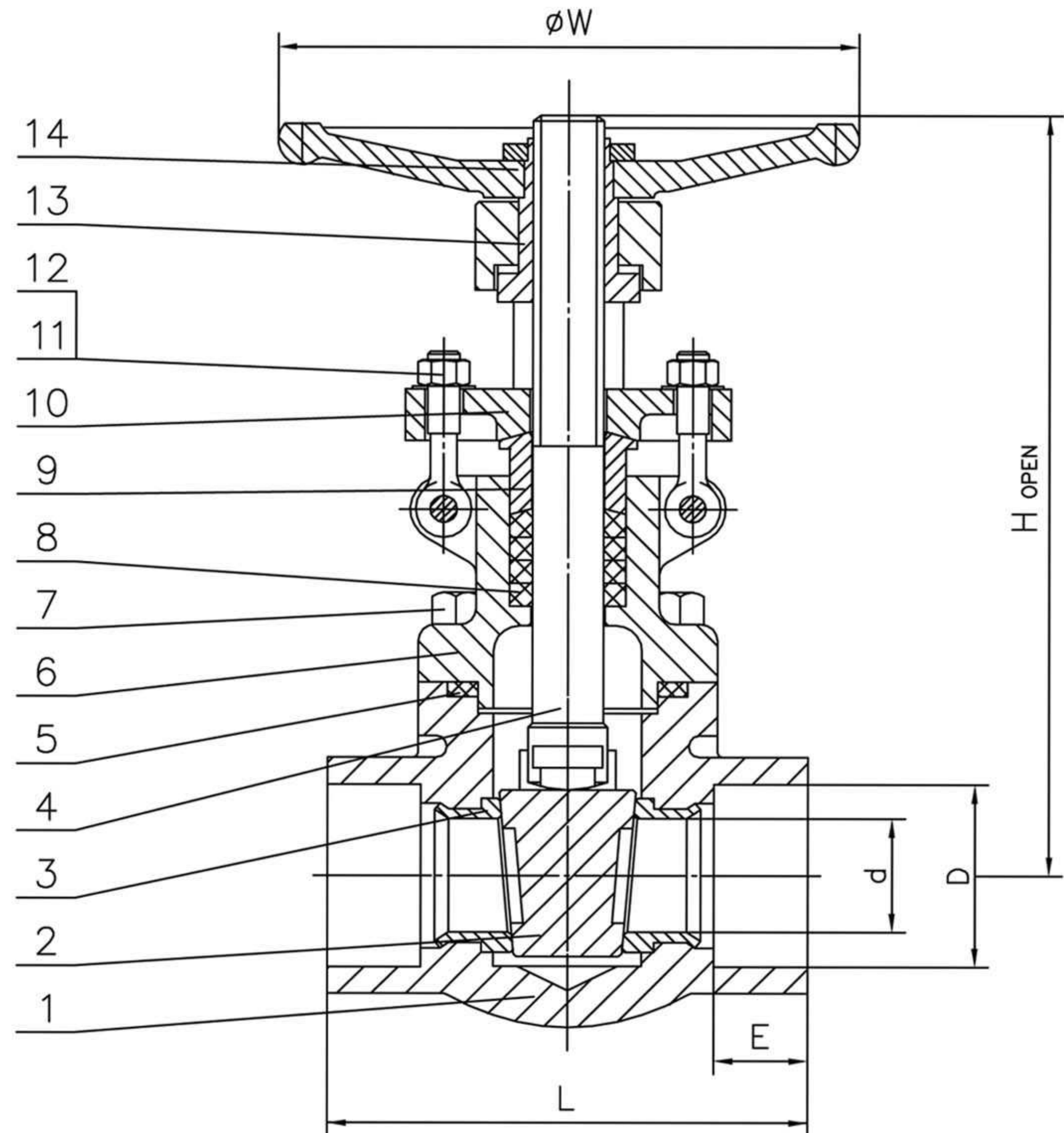
ARFS/NTGA-XXX
ARFS/SWGA-XXX

ARFSNTGA-XXX
ARFSSWGA-XXX



A MEMBER OF UNIMECH GROUP, MALAYSIA

FORGED STAINLESS STEEL GATE VALVE CLASS 800



Technical Data

Features :

- * Class 800
- * Pressure Temperature Rating : ASME B 16.34
- * Inspection & Test : API 598
- * End Connection : i) Socket Weld (ANSI B16.11)
ii) NPT (ANSI B1.20.1)
- * Applicable : Water, Oil & Gas

Material

No.	PART	MATERIAL
1	BODY	ASTM A182 F304/316
2	WEDGE	ASTM A182 F304/316
3	SEAT RING	ASTM A182 F304/316
4	STEM	ASTM A182 F304/316
5	GASKET	GRAPHITE+SS304/316
6	BONNET	ASTM A182 F304/316
7	BONNET BLOT	ASTM A193 B8
8	STEM PACKING	GRAPHITE
9	GLAND	ASTM A182 F304/316
10	GLAND FLANGE	ASTM A182 F304/316
11	GLAND EYEBOLT	ASTM A193 B8
12	GLAND NUT	ASTM A194 8
13	STEM NUT	ASTM A276 410
14	HAND WHEEL	ASTM A197

Dimension in mm

SIZES		d	D	E	L	H	W
DN	in.						
15	1/2"	10.5	21.8	9.6	79	140	98
20	3/4"	13.5	27.2	12.7	92	143	98
25	1"	18	33.9	12.7	111	170	125
40	1.1/2"	29	48.8	12.7	120	210	160
50	2"	36	61.2	16	140	245	185

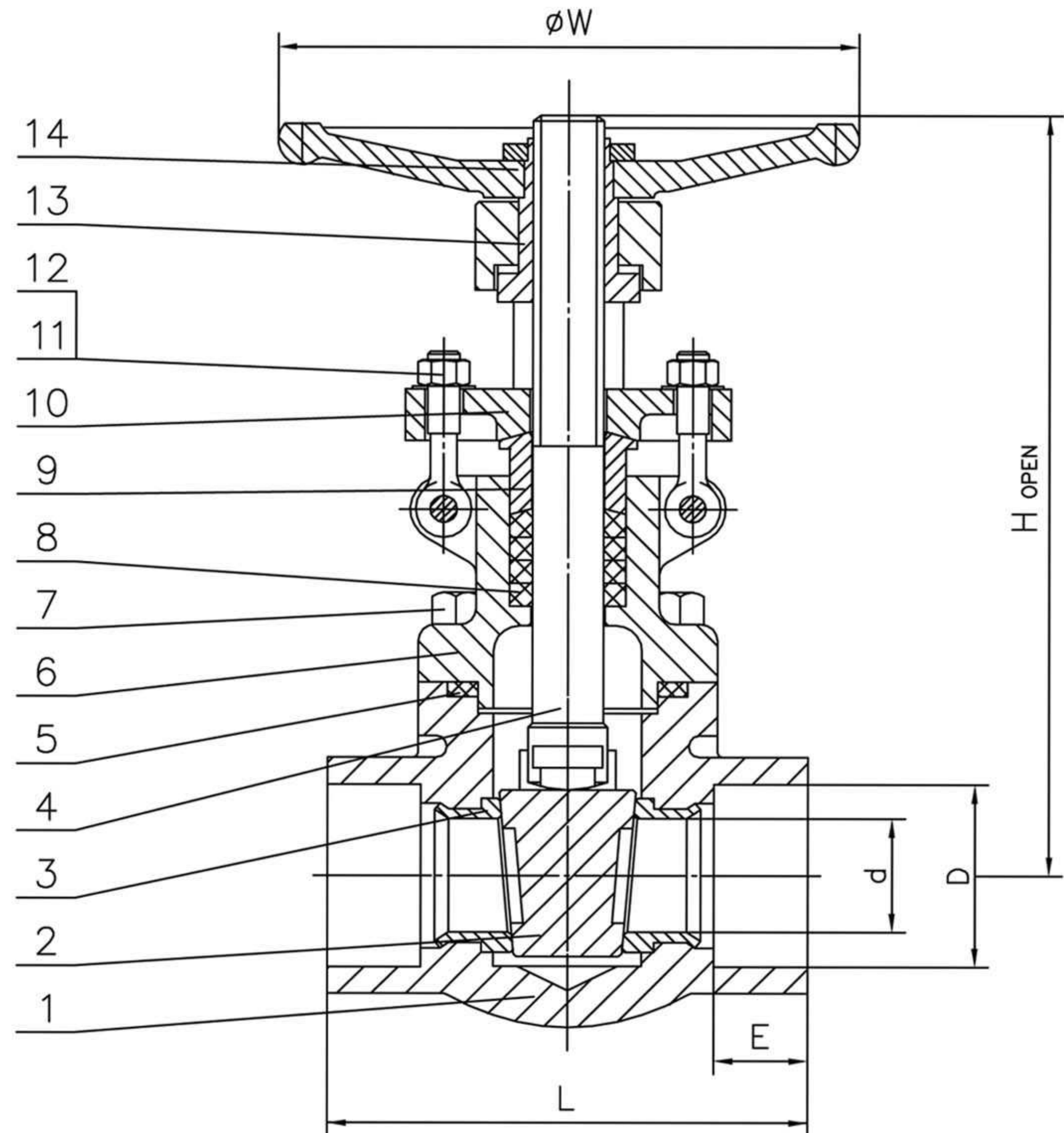
ARFS/NTGA-XXX
ARFS/SWGA-XXX

ARFSNTGA-XXX
ARFSSWGA-XXX



A MEMBER OF UNIMECH GROUP, MALAYSIA

FORGED STAINLESS STEEL GATE VALVE CLASS 800



Technical Data

Features :

- * Class 800
- * Pressure Temperature Rating : ASME B 16.34
- * Inspection & Test : API 598
- * End Connection : i) Socket Weld (ANSI B16.11)
ii) NPT (ANSI B1.20.1)
- * Applicable : Water, Oil & Gas

Material

No.	PART	MATERIAL
1	BODY	ASTM A182 F304/316
2	WEDGE	ASTM A182 F304/316
3	SEAT RING	ASTM A182 F304/316
4	STEM	ASTM A182 F304/316
5	GASKET	GRAPHITE+SS304/316
6	BONNET	ASTM A182 F304/316
7	BONNET BLOT	ASTM A193 B8
8	STEM PACKING	GRAPHITE
9	GLAND	ASTM A182 F304/316
10	GLAND FLANGE	ASTM A182 F304/316
11	GLAND EYEBOLT	ASTM A193 B8
12	GLAND NUT	ASTM A194 8
13	STEM NUT	ASTM A276 410
14	HAND WHEEL	ASTM A197

Dimension in mm

SIZES		d	D	E	L	H	W
DN	in.						
15	1/2"	10.5	21.8	9.6	79	140	98
20	3/4"	13.5	27.2	12.7	92	143	98
25	1"	18	33.9	12.7	111	170	125
40	1.1/2"	29	48.8	12.7	120	210	160
50	2"	36	61.2	16	140	245	185

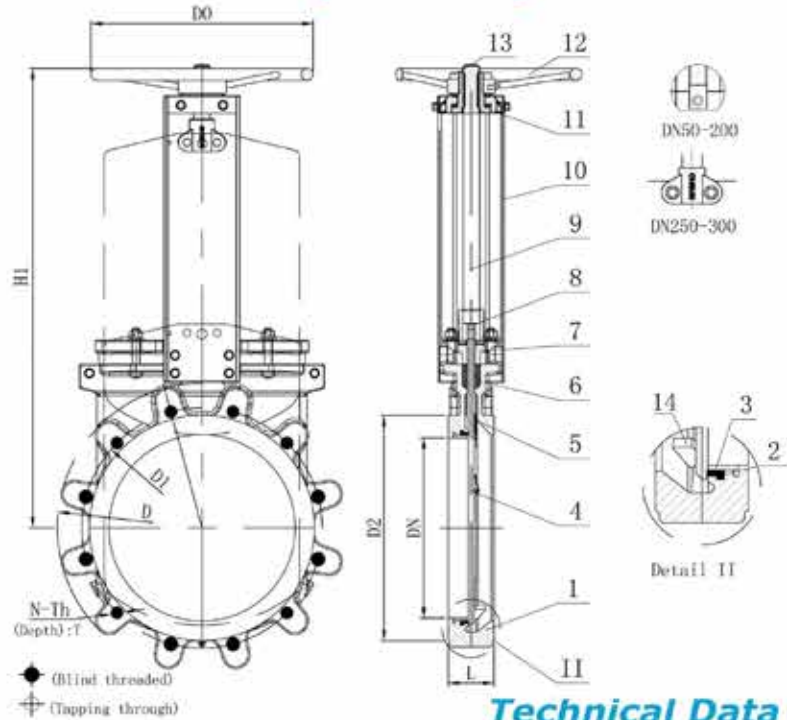
KNIFE GATE VALVE FLANGED END JIS 10K (LUG TYPE)

ARV-110FE(J)



Features :

Working Pressure : 10 bar / 150 psi
 Working Temperature : -10 to 120°C
 Flange Connection : JIS 10K



Technical Data

Material

No	PART	MATERIAL
1	BODY	CF8 / CF8M
2	SEAT	EPDM
3	STEEL RING	SS304 / SS316
4	DISC	SS304 / SS316
5	GUIDE PAD	PTFE
6	PACKING	PTFE
7	PACKING GLAND	WCB / CF8

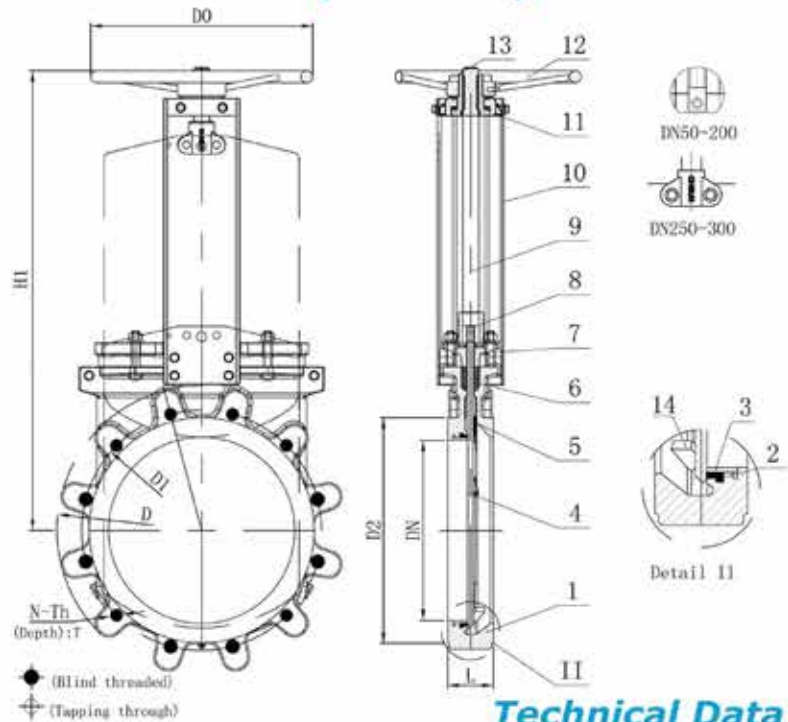
No	PART	MATERIAL
8	CHUCK	WCB
9	STEM	SS304
10	YOKE	Q235 (Cr.D)
11	YOKE HEAD	Assembly
12	HANDWHEEL	CAST IRON (GGG40)
13	CAP	Q235 (Cr.D)
14	WEDGE	CF8 / CF8M

Dimension in mm

DN	L	D	D1	D2	D0	N-Th	T	●	⊕	d	H1
50	48	155	120	96	180	4-M16	12	4	0	Ø19	292
65	48	175	140	116	200	4-M16	12	4	0	Ø19	320
80	51	185	150	126	200	8-M16	12	8	0	Ø19	348
100	51	210	175	151	240	8-M16	12	8	0	Ø19	395
125	57	250	210	182	260	8-M20	14	8	0	Ø23	450
150	57	280	240	212	280	8-M20	14	8	0	Ø23	504
200	70	330	290	262	300	12-M20	18	14	0	Ø23	617
250	70	400	355	324	320	12-M22	18	14	0	Ø25	758
300	76	445	400	368	350	16-M22	20	16	0	Ø25	857

KNIFE GATE VALVE FLANGED END 150LBS (LUG TYPE)

ARV-110FE(A)



Features :

Working Pressure : 10 bar / 150 psi
 Working Temperature : -10 to 120°C
 Flange Connection : ANSI B16.5
 (Class 150)

Material

No	PART	MATERIAL
1	BODY	CF8 / CF8M
2	SEAT	EPDM
3	STEEL RING	SS304 / SS316
4	DISC	SS304 / SS316
5	GUIDE PAD	PTFE
6	PACKING	PTFE
7	PACKING GLAND	WCB / CF8

Technical Data

No	PART	MATERIAL
8	CHUCK	WCB
9	STEM	SS304
10	YOKE	Q235 (Cr.D)
11	YOKE HEAD	Assembly
12	HANDWHEEL	CAST IRON (GGG40)
13	CAP	Q235 (Cr.D)
14	WEDGE	CF8 / CF8M

Dimension in mm

DN	L	D	D1	D2	D0	N-Th	T	◆	⊕	d	H1
50	48	152	121	92	180	4-M5/8-11	12	4	0	Ø19	292
65	48	178	140	105	200	4-M5/8-11	12	4	0	Ø19	320
80	51	191	153	127	200	4-M5/8-11	12	8	0	Ø19	348
100	51	229	191	157	240	8-M5.8-11	12	8	0	Ø19	395
125	57	254	216	186	260	8-M3/4-10	14	8	0	Ø22	450
150	57	279	242	216	280	8-M3/4-10	14	8	0	Ø22	504
200	70	343	299	270	300	8-M3/4-10	18	8	0	Ø22	617
250	70	400	362	324	320	12-M7/8-9	18	12	0	Ø25	758
300	76	483	432	381	350	12-M7/8-9	20	12	0	Ø25	857