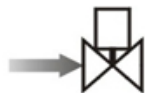


## SLB Series 2/2 Way Pilot Operated High (Low) Temperature Solenoid Valve / Normally Closed



### Normally Closed

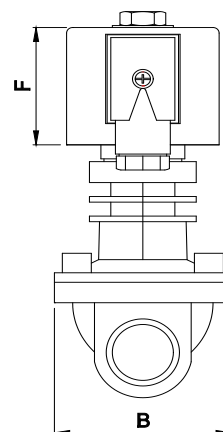
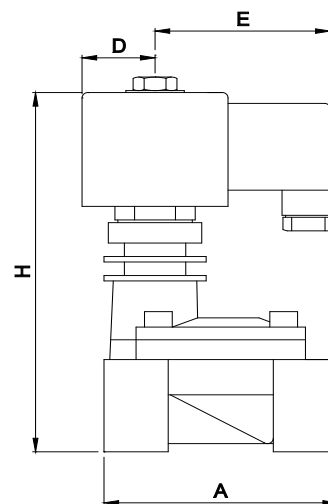
De-energized  
Closed



Energized  
Open



### DIMENSION



### Application:

Oil, steam, High/Low temperature Liquid & etc.

### Specification:

Body	: Forged Brass
Sealing	: Teflon
Pressure (M.O.P.D)	: 1.0~ 10.0 bar Max 15.0 bar
Media Temperature	: -30 ~ 180 °C
Ambient temperature	: -20 ~ 65 °C
Voltage	: AC110, 240V 50Hz : DC 24V
Power Consumption	: AC-27VA(16W), DC-24W
Tolerance	: +/- 10% ( AC ), +/-5% ( DC )
Coil	: Din Standard, Metallic housing

### Feature:

- Adopted high temperature resistance seal material (PTFE) when the media passage the properties is good.
- High flow rate, high & low temperature media.
- Coil is design to turn in free direction and heat conduction protection

### Unsuitable Fluid:

- Viscosity over 50 CST.
- Liquid when be heating, solid when cool.
- Do not use at corrosive fluid.

### Caution:

- Please clean up the inside of pipes before fitted.
- A strainer or filter has to be installed one meter away from the solenoid valve. Please install more than 60 mesh filter
- Installation : flow as the arrow, solenoid vertical and upright direction

MODEL	CONNECTION	CV VALUE	ORIFICE (MM)	DIMENSION (mm)						
				A	B	H				
SLB-15	G1/2"	4.2	13	66	48	157				
SLB-20	G3/4"	7.3	20	75	58	165				
SLB-25	G1"	11.5	25	96	70	176				
SLB-32	G1 1/4"	22.0	32	131	96	196				
SLB-40	G1 1/2"	29	40	131	96	196				

**\*\*Note:** All technical specification are without obligation!

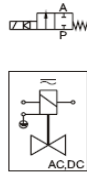
## 2/2 WAY PILOT OPERATED, NORMALLY CLOSED



e.g. : PS-25



e.g. : PS-25N



### Application:

Steam, Water, Hot water, Air, oil(below 20 cst)

### Function:

Valve de-energised closed by spring power normally closed ( NC )

When energized, the pressure decomposes the secondary side of the piston, then the pressure differential lift the piston from the seat.

A pressure diffrential is necessary for proper operation.

### Specification:

Body material	: Brass
Sealing material	: PTFE
Pressure range	: 0.4~16 bar
Medium temperature	: -5 ~ 180°C
Ambient	: 50°C
Enclosure	: Lead wire IP54 ; option: DIN coil IP65
Power	
AC	: 220V ~ 230V, 50/60Hz, 22VA 110V ~ 120V, 50/60Hz, 19VA
DC	: 24V, 10W
Tolerance	: ±10% (AC), ±5% (AC)

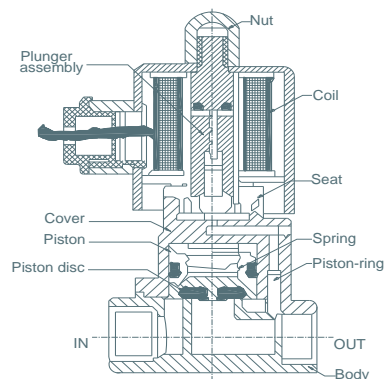
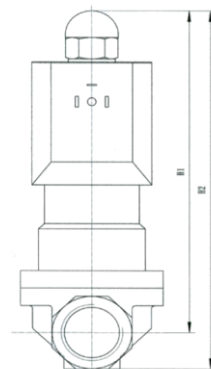
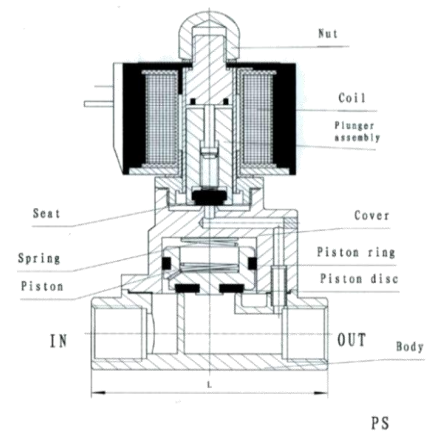
### Unsuitable Fluid:

- Corrosive Fluid, viscosity degree too high, over 20 cst.
- Liquid when be heating, solid when cool.
- Please do not install in high frequent operations.

### Caution :

- Please clean up the inside of pipes before fitted.
- To install a strainer or filter in front of the solenoid valve.
- Up right installation is best for long life.

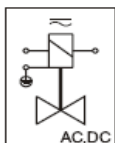
### DIMENSION



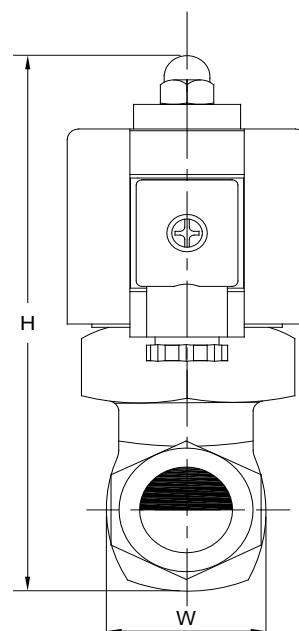
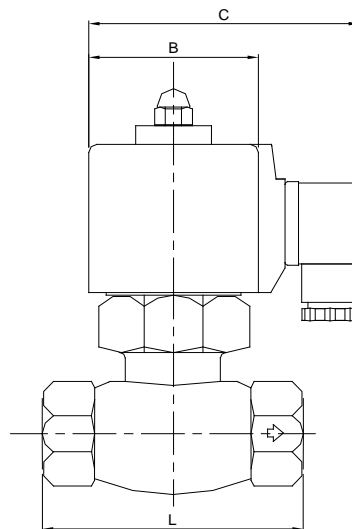
Model	Size	Orifice (mm)	Cv Value	Pressure (bar)		L (mm)	H1 (mm)	H2 (mm)
				Min.	Max			
PS-15	1/2"	15	4.5	0.4	16	70	124	137
PS-20	3/4"	20	7.6	0.4	16	75	132	148
PS-25	1"	25	12	0.4	16	92	138	157
PS-32	1 1/4"	32	22	0.4	16	110	142	164
PS-40	1 1/2"	40	30	0.4	16	122	142	167
PS-50	2"	50	48	0.4	16	161	159	193

\* Data subject to alteration

Pilot Operated Type, 2/2 Way, Piston Design, Normally Closed



## DIMENSION



### Application:

Water, Air, Hot water, Steam, etc.

### Function:

Valve de-energized closed by spring power normally closed ( NC )  
When energized, the pressure decomposes the secondary side of the piston, then the pressure differential lift the piston from the seat.  
A pressure differential is necessary for proper operation.

### Specification:

Body material	:	Brass
Sealing material	:	PTFE
Pressure range	:	1~10 bar
Fluid temperature	:	
PTFE	:	-5 ~ 180°C
Ambient	:	50°C
Enclosure	:	DIN coil IP65 : Option : Lead Wire IP54
Voltage available	:	
AC	:	24, 110, 240V50Hz
DC	:	24V
Tolerance	:	±10%
Power Consumption	:	
AC	:	≈ 28VA
DC	:	30 Watts

### Unsuitable Fluid:

- Corrosive Fluid, viscosity degree too high, over 50 cst.
- Liquid when be heating, solid when cool.
- Please do not install in high frequent operations.

### Caution :

- Please clean up the inside of pipes before fitted.
- To install a strainer or filter in front of the solenoid valve.
- Up right installation is best for long life.

Model	Size	Orifice (mm)	Cv Value	L	H	W	B	C
AL-15	1/2"	17	4.8	83	148	41.5	63	97.5
AL-20	3/4"	17	4.8	83	148	41.5	63	97.5
AL-25	1"	25	12	95	155	52.5	63	97.5
AL-32	1¼"	30	20	110	178	70	63	97.5
AL-40	1½"	30	20	110	178	70	63	97.5
AL-50	2"	50	48	165	223	94	63	97.5

**\*\*Note:** All technical specification are without obligation!

## SLA Brass Series · 2/2-Way Piston Solenoid Valve · Normally Closed



### Normally Closed

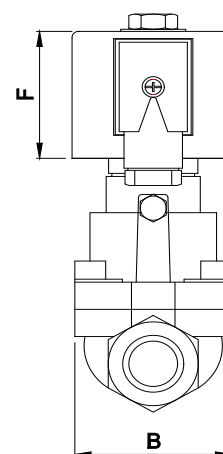
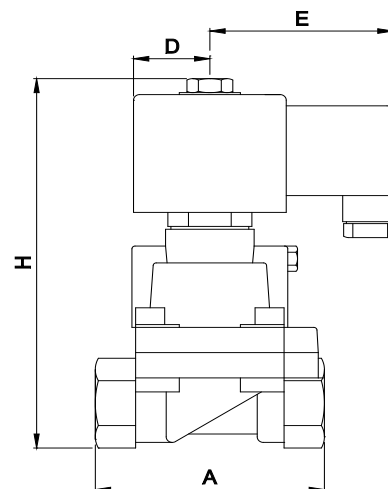
De-energized  
Closed



Energized  
Open



### DIMENSION



### Application:

Air, water, oil, Steam & etc.

### Specification:

Body : Brass  
Sealing : Teflon  
Pressure (M.O.P.D) : 0.5 ~ 25bar (Air, Water, Gas )  
0.5 ~ 10bar

( Steam ) Media Temperature : Max 180 °C

Ambient temperature : 0 ~ 65 °C

Voltage : AC110, 240V 50/60Hz

DC 24V

Power Consumption : AC-27VA(16W), DC-24W

Tolerance : +/- 10% ( AC ), +/-5% ( DC )

Coil : Din Standard, Metallic housing

### Feature:

- Can be installed in any position but the level condition to keep coil upside best for long life.
- Small size, high flow rate, widely use.
- Coil is design to turn in free direction.

### Unsuitable Fluid:

- Viscosity over 50 CST.
- Liquid when be heating, solid when cool.
- Do not use at corrosive fluid.

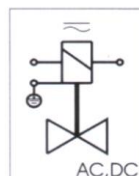
### Caution:

- Please clean up the inside of pipes before fitted.
- A strainer or filter has to be installed one meter away from the solenoid valve. Please install more than 60 mesh filter.
- Installation : flow as the arrow, solenoid vertical and upright direction

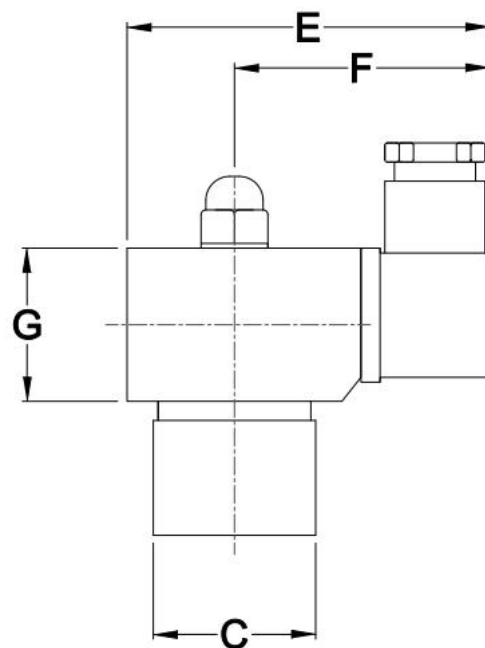
MODEL	CONNECTION	CV VALUE	ORIFICE (MM)	DIMENSION (mm)						
				A	B	H	D	E	F	
SLA-15	G1/2"	4.5	15	75	52	129	50	61	42.5	
SLA-20	G3/4"	9.0	20	85	60	141	50	61	42.5	
SLA-25	G1"	13	25	100	70	148	50	61	42.5	
SLA-32	G1.1/4"	26	35	120	90	168	50	61	42.5	
SLA-40	G1.1/2"	26	35	120	90	168	50	61	42.5	
SLA-50	G2"	48	50	150	110	190	50	61	42.5	

\*\*Note: All technical specification are without obligation!

## Direct Acting Type, 2/2 Way, General Service, Normally Closed



### DIMENSION



### Application:

Air, water, gas, light oil, vacuum, etc.

### Specification:

Body	:	SS304
Sealing	:	Viton
Pressure (M.O.P.D)	:	0~ 5bar ( water, liquid ) 0~ 7bar ( air, gas )
Enclose	:	Lead wire IP54 ; option : DIN coil IP65
Fluid temperature	:	5 ~ 110 °C
Ambient temperature	:	50°C
Voltage	:	AC110, 240V, 50Hz DC 24V
Tolerance	:	±10% ( AC ), ±5% ( DC )

### Feature:

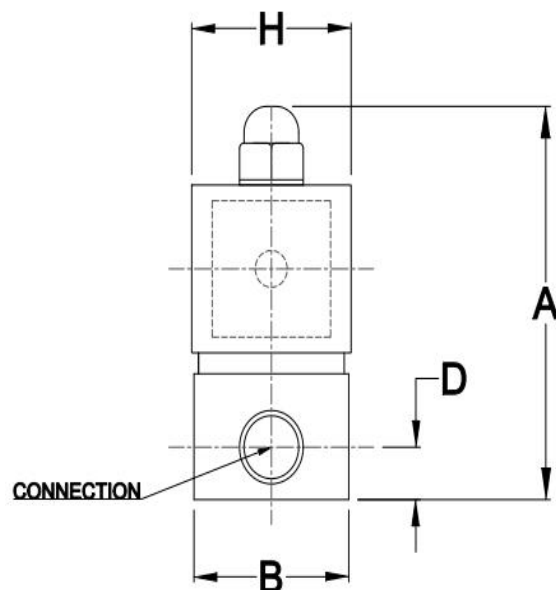
- Can be installed in any position but the level condition to keep coil upside best for long life.
- Small volume, simple construction and easy to assemble.
- Coil is design to turn in free direction.

### Unsuitable Fluid:

- Viscosity over 50 CST.
- Liquid when be heating, solid when cool.

### Caution:

- Please clean up the inside of pipes before fitted.
- A strainer or filter has to be installed one meter away from the solenoid valve.

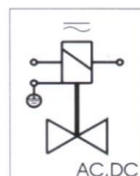


Unit : mm

MODEL	CONNECTION	CV VALUE	ORIFICE (MM)	DIMENSION							
				A	B	C	D	E	F	G	H
2W025SS-06-304	1/4"	0.23	2.5	78	34	34	10	77	55	32	35
2W050SS-10-304	3/8"	0.57	5.0	95	40	40	14	82	58	39	38.5

\* Data subject to alteration

## Direct Acting Type, 2/2 Way, General Service, Normally Closed



### Application:

Air, water, gas, light oil, vacuum, etc.

### Specification:

Body	:	Brass
Sealing	:	NBR
Pressure (M.O.P.D)	:	0~ 5bar ( water, liquid ) 0~ 7bar ( air, gas )
Enclose	:	Lead wire IP54 ; option : DIN coil IP65
Fluid temperature	:	5 ~ 80 °C
Ambient temperature	:	50°C
Voltage	:	AC110, 240V, 50Hz DC 24V
Tolerance	:	±10% ( AC ), ±5% ( DC )

### Feature:

- Can be installed in any position but the level condition to keep coil upside best for long life.
- Small volume, simple construction and easy to assemble.
- Coil is design to turn in free direction.

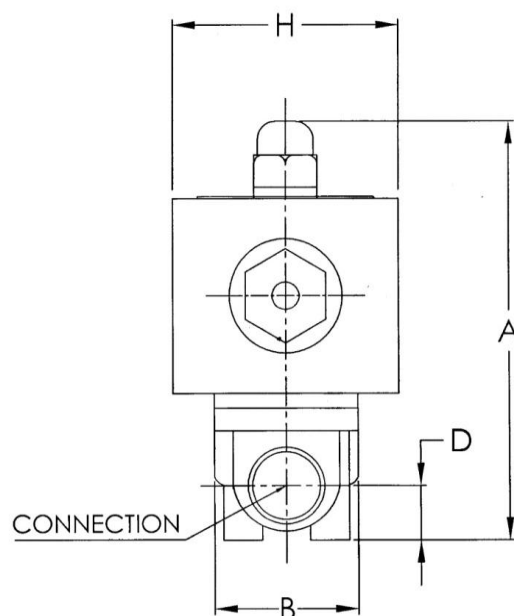
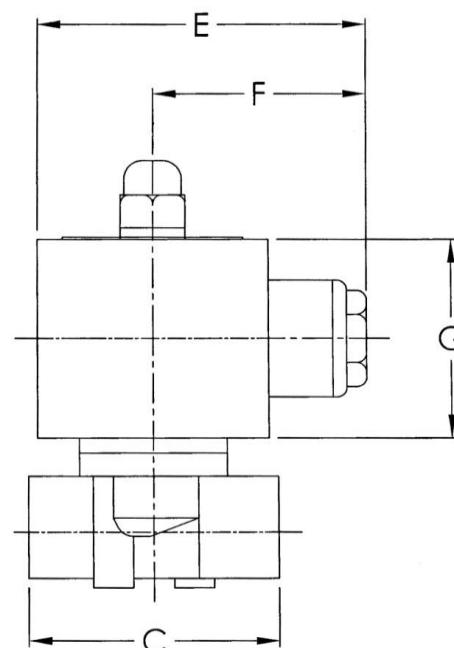
### Unsuitable Fluid:

- Viscosity over 50 CST.
- Liquid when be heating, solid when cool.
- Do not use at corrosive fluid.

### Caution:

- Please clean up the inside of pipes before fitted.
- A strainer or filter has to be installed one meter away from the solenoid valve.

### DIMENSION

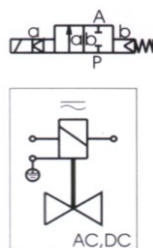


MODEL	CONNECTION	CV VALUE	ORIFICE (MM)	DIMENSION							
				A	B	C	D	E	F	G	H
AW-06	1/4"	0.23	2.5	79.0	29.6	40.0	11.0			35.7	42.6
AW-10	3/8"	0.57	5.0	89.0	31.8	54.0	12.9	71.3	46.5	42.5	50.0

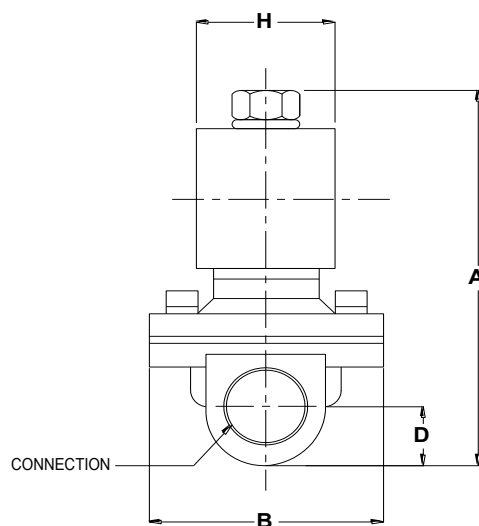
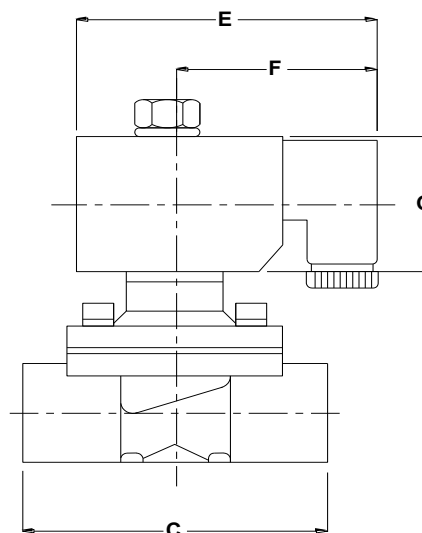
\* Data subject to alteration



## Forced Lifting Type, 2/2 Way, General Service, Normally Closed



### DIMENSION



### Application

Air, water, gas, light oil, etc.

### Specification:

Body	: Stainless Steel 316 / SUS 304 (option)
Sealing	: VITON
Pressure (M.O.P.D)	: 0~ 5bar ( water, liquid, Oil, weak acid & alkaline) 0~ 7bar ( air, gas)
Enclose	: Lead wire IP54 ; Option : DIN coil
IP65 Fluid temperature	: -5 ~ 110 °C
Ambient temperature	: 50 °C
Voltage	: AC110, 220V, 50Hz : DC 24V
Tolerance	: +/- 10% ( AC ), +/-5% ( DC )

### Feature:

- Can be installed in any position but the level condition to keep coil upside best for long life.
- Small volume, high flow, little electric power required.
- Coil is design to turn in free direction.

### Unsuitable Fluid:

- Viscosity over 50 CST.
- Liquid when be heating, solid when cool.

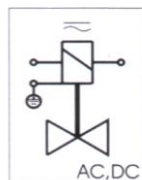
### Caution:

- Please clean up the inside of pipes before fitted.
- A strainer or filter has to be installed one meter away from the solenoid valve.

MODEL	CONNECTION	CV VALUE	ORIFICE (MM)	DIMENSION							
				A	B	C	D	E	F	G	H
2W160SS-15-316	1/2"	3.6	16	109.0	57.5	68.0	13.2	81.8	57.5	40.5	38.8
2W200SS-20-316	3/4"	7.5	20	110.3	57.5	72.7	16.7	81.8	57.5	40.5	38.8
2W250SS-25-316	1"	9.6	26	118.5	77.3	99	20.5	81.8	57.5	40.5	38.8
2W350SS-32-316	1 1/4"	20	38	148.6	86.8	116.5	23.7	97.8	67	72.6	63
2W400SS-40-316	1 1/2"	20	38	155.7	93.8	121.2	27.2	97.8	67	72.6	63
2W500SS-50-316	2"	38	50	180	122.8	167.3	35	97.8	67	72.6	63

\* Data subject to alteration

## Forced Lifting Type, 2/2 Way, General Service, Normally Closed



### Application:

Air, water, gas, light oil, vacuum, etc.

### Specification:

Body	: Brass
Sealing	: NBR
Pressure (M.O.P.D)	: 0~ 5bar ( water, liquid ) 0~ 7bar ( air, gas )
Enclose	: Lead wire, Din Type Coil ( option)
Fluid temperature	: 5 ~ 80 degree C°
Ambient temperature	: 50 degree C°
Voltage	: AC110, 240V 50Hz : DC 24V
Tolerance	: +/- 10% ( AC ), +/-5% ( DC )

### Feature:

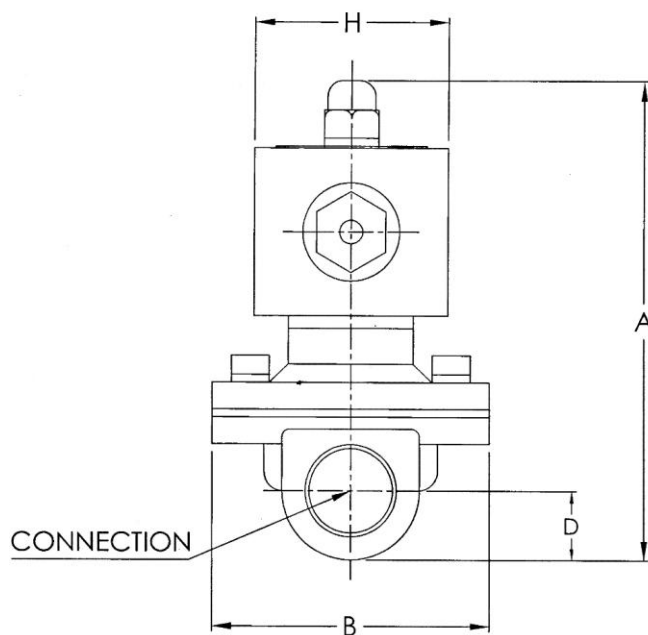
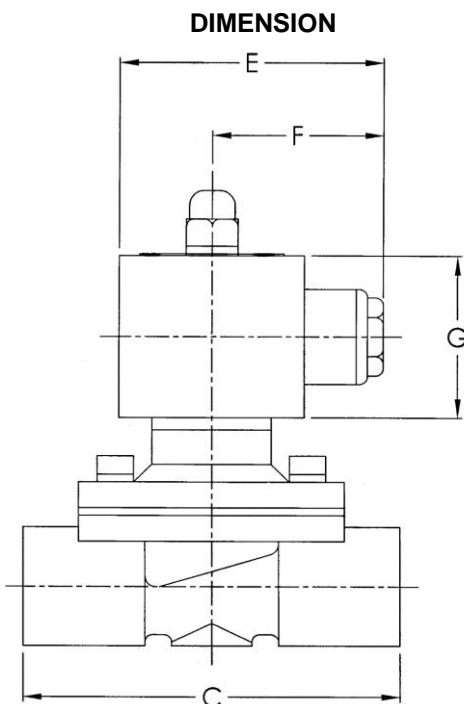
- Can be installed in any position but the level condition to keep coil upside best for long life.
- Small volume, high flow, little electric power required.
- Coil is design to turn in free direction.

### Unsuitable Fluid:

- Viscosity over 50 CST.
- Liquid when be heating, solid when cool.
- Do not use at corrosive fluid.

### Caution:

- Please clean up the inside of pipes before fitted.
- A strainer or filter has to be installed one meter away from the solenoid valve.

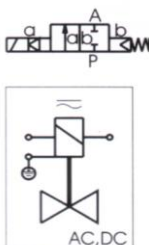


MODEL	CONNECTION	CV VALUE	ORIFICE (MM)	DIMENSION							
				A	B	C	D	E	F	G	H
AW-15	1/2"	4.8	16	113.0	57.5	68.0	13.2	71.3	46.5	42.5	50.0
AW-20	3/4"	7.6	20	119.5	57.5	71.5	17.5	72.0	46.5	43.0	50.0
AW-25	1"	12	25	129.0	77.5	97.0	20.5	71.5	48.5	43.5	50.0
AW-32	1 1/4"	24	35	166.0	96.0	116.5	27.5	91.5	56.5	64.7	70.0
AW-40	1 1/2"	29	40	168.5	96.0	116.5	29.5	91.5	56.5	64.7	70.0
AW-50	2"	48	50	192.0	126.0	160.5	38.5	91.5	56.5	64.7	70.0

\*\*Note: All technical specification are without obligation!



## PU Series Solenoid Valve, Forced Lifting Type, 2/2 Way, General Service, Normally Closed



### Application:

Air, water, gas, light oil, vacuum, etc.

### Specification:

Body	: Brass
Sealing	: NBR
Pressure (M.O.P.D)	: 0 ~ 7bar ( air, water, oil)
Max. Pressure	: 10.5 bar
Enclose	: DIN coil IP65
Medium temperature	: -5 ~ 80°C
Ambient temperature	: 50°C
Voltage	: AC110, 240V, 50Hz : DC 24V
Tolerance	: +/- 10% ( AC ), +/-5% ( DC )

### Features:

- a) Compact and good appearance
- b) Direct acting, diaphragm structure, can work at zero pressure
- c) Coil made from H class wire, thermosetting plastic encapsulating, reach IP65 protection class with plug

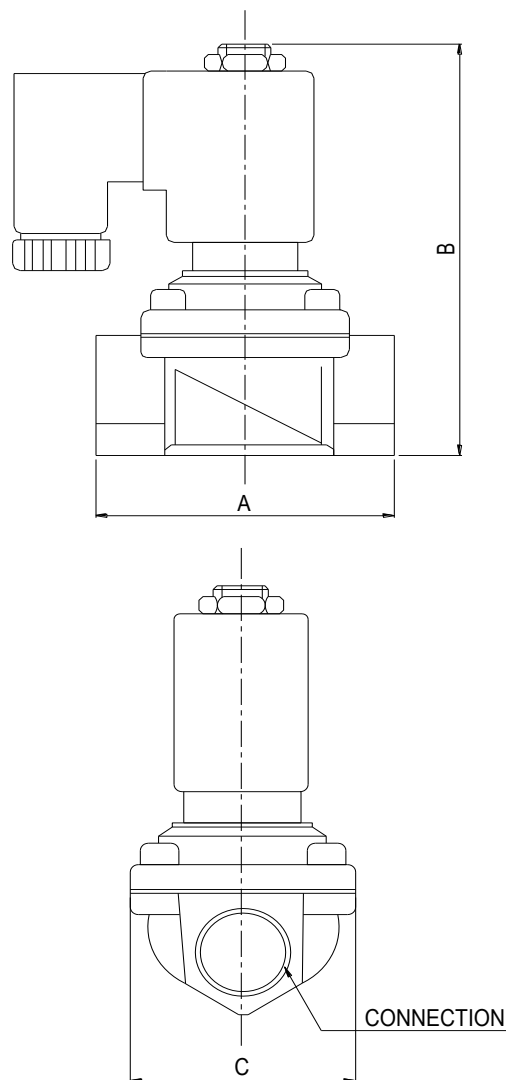
### Unsuitable Fluid:

- a) Viscosity over 50 CST.
- b) Liquid when be heating, solid when cool.
- c) Do not use at corrosive fluid.

### Caution:

- a) Please clean up the inside of pipes before fitted.
- a) A strainer or filter has to be installed one meter away from the solenoid valve.

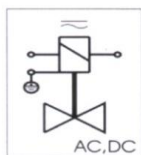
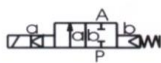
### DIMENSION



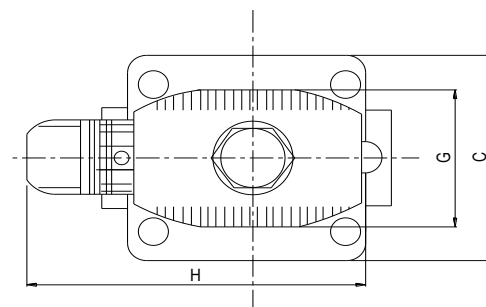
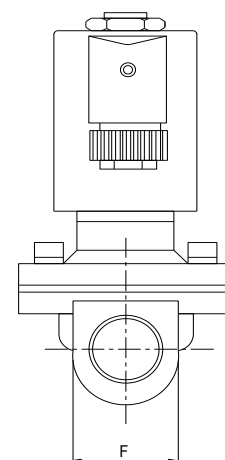
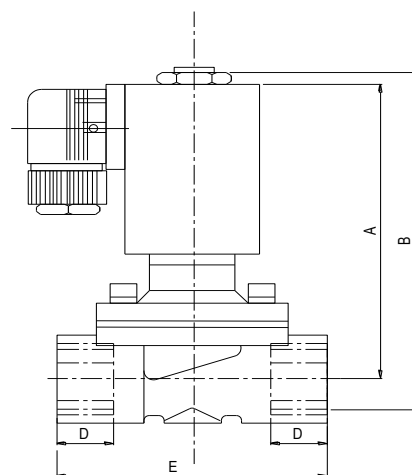
MODEL	CONNECTION	CV VALUE	ORIFICE (MM)	DIMENSION		
				A	B	C
PU-220-02AR	1/4"	0.18	2.3	30.0	62.0	22.0
PU-220-03AR	3/8"	1.00	8.0	55.0	79.5	30.0
PU-220-04A	1/2"	4.00	13	65.5	101.0	48.0
PU-220-06A	3/4"	8.60	20	71.0	107.0	58.0
PU-220-08A	1"	11.00	25	96.0	121.0	70.0

\* Data subject to alteration

## SB116-2A Series Solenoid Valve, Forced Lifting Type, 2/2 way, Normally Closed



### DIMENSION



### Specification:

Body	: Brass
Sealing	: Viton
Pressure (M.O.P.D)	: 0~ 1.0 MPa
Enclose	: DIN coil IP65
Ambient temperature	: -10 ~ + 55°C
Medium temperature	: -10 ~ + 90°C
Voltage	: AC110, 240V, 50Hz : DC 24V
Tolerance	: +/- 10% ( AC ), +/-5% ( DC )
Power Consumption	:
AC	: 14 ~ 17VA
DC	: 8 ~ 20 watts

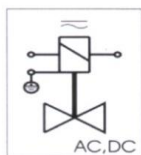
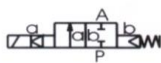
### Speciality :

- \* Can work at zero pressure
- \* Can be used below 90°C
- \* Can be used for gas , water, oil, weak acid & Alkaline
- \* Low noise : no-water hammer impact, no shaking noise, large flow
- \* High reliability, long life
- \* Coil model : BD-A-3
- \* Thermosetting plastic encapsulating
- \* Plug conforms with ISO standard
- \* Ip65 protection class with plug
- \* Change to ex-proof coil & suitable armature, can be used ex-proof valve

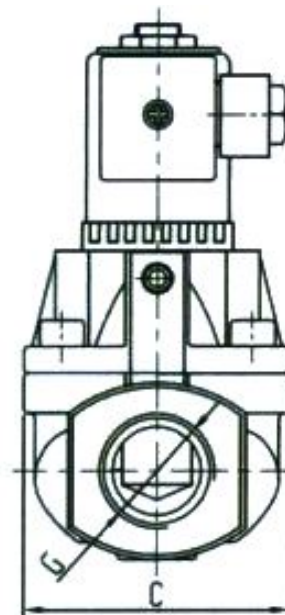
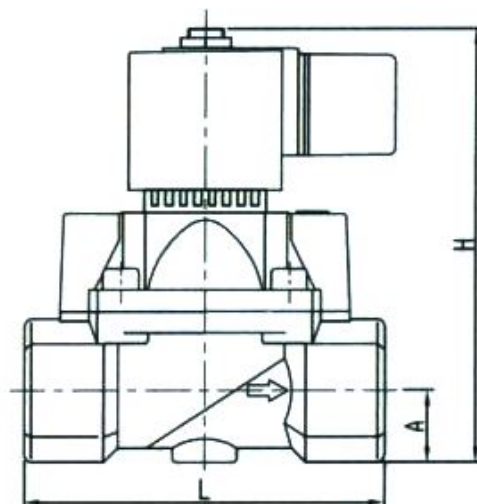
MODEL	CONNECTION	CV VALUE	ORIFFICE (MM)	DIMENSION							
				A	B	C	D	E	F	G	H
SB116-2010-10A	3/8"	2	10	67.3	82	32	14	52	26	36	75.6
SB116-2015-14A	1/2"	8.3	14	73.2	89	40	16.0	66.3	26	36	75.6
SB116-2020-20A	3/4"	4.8	20	104	130	60.3	18	83	41	45	88
SB116-2025-20A	1"	4.8	20	104	130	60.3	18	83	41	45	88

\* Data subject to alteration

## SB116-5 Series Solenoid Valve, Forced Lifting Type, 2/2 way, Normally Closed



### DIMENSION



### Specification:

Body	: Brass
Sealing	: PTFE
Pressure (M.O.P.D)	: 0.1 ~ 4.0 MPa
Enclose	: DIN coil IP65
Ambient temperature	: -20 ~ + 55°C
Medium temperature	: 0 ~ + 90°C
Voltage	: 240V, 50Hz, 20 VA : DC 24V, 13W
Tolerance	: +/- 10% ( AC ), +/-5% ( DC )

### Speciality :

- \* It can be used in gas, water, oil weak acid & alkaline.
- \* Low noise, no-water hammer impact, low noise, stable working, large flow, long service life.
- \* Coil model: BD-A-3
- \* The coil made from thermosetting plastic encapsulating, the protection class IP65. Plug confirms with ISO standard.

Unit : mm

MODEL	CONNECTION (G)	ORIFICE (MM)	DIMENSION			
			K	L	B	A
SB116-51315	G1/2"	13	33.5	72	85	13
SB116-52520	G3/4"	25	60	100	120	20
SB116-52525	G1"	25	60	100	120	20

\* Data subject to alteration



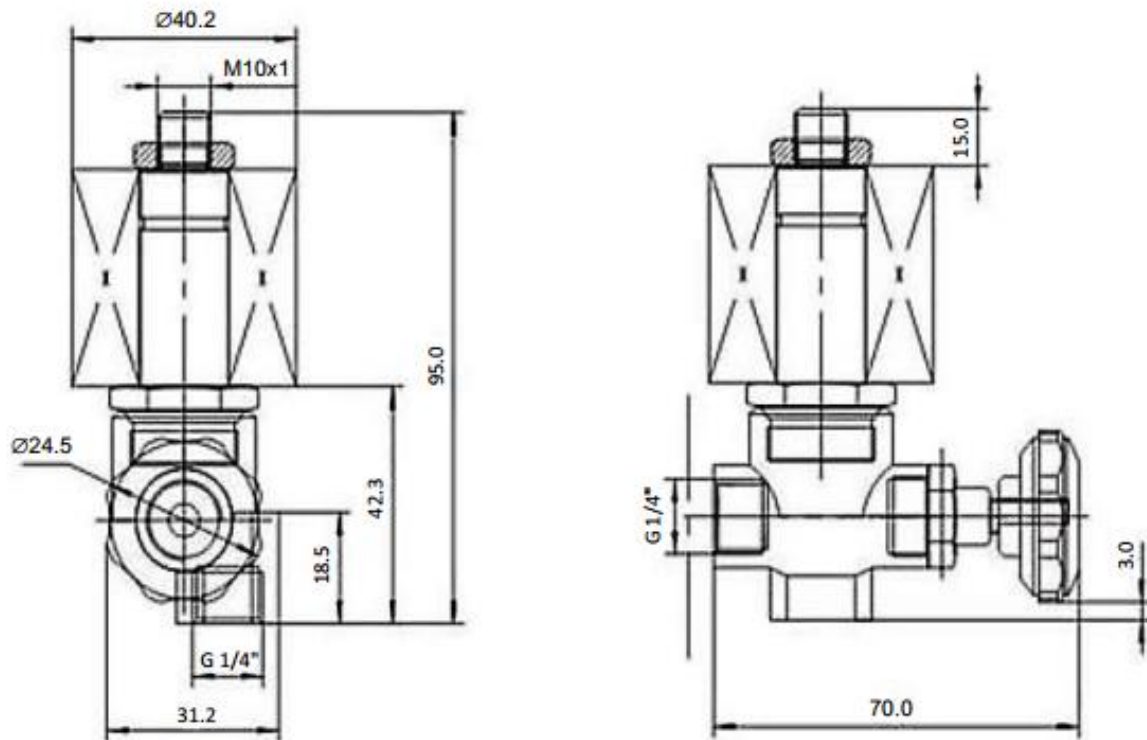
## DL-6E STEAM SOLENOID VALVE

### Product Features:

- ❖ Steam valve used for steam iron.
- ❖ Valve and tube are machined from one same forged brass body, good design to avoid leakage and withstand high pressure.
- ❖ Higher pressure range that can reach to 25 Bar.



### Dimensions (mm)



### Technical Parameters

Item No.	Orifice (mm)	Port Size	Pressure (bar)	Working temp	Voltage	Body Material	Seal
DL-6E	2.5	G1/4	0-25	-20°C – 180 °C	24VDC ~ 230VAC	Brass	Viton